

# Baltimore Brass Co.

Your Local School Band & Orchestra Headquarters

## Low Payments

Starting at

**\$22<sup>00</sup>**

per month



## Top Quality



Veritas is an authorized dealer of **JUPITER** **CONN - SELMER** *Gemeinhardt* and other fine brands. Some restrictions apply.

| Month-To-Month Rental Program Pricing | Group One<br>Composite Clarinet, Flute, Trumpet, Trombone, Cornet, Violin/Viola, Piccolo, Snare, Bell & Combo Kit |                | Group Two<br>Wood Clarinet, Student Open Hole Flute, Alto & Soprano Saxophone, Baritone Horn/Euphonium |                | Group Three<br>Student Oboe, Bass Clarinet, Tenor Saxophone, Cello, Trombone w/ F Attachment, Single French Horn |                | Group Four<br>Double French Horn Student Bassoon, 3/4 Tuba |                 |
|---------------------------------------|-------------------------------------------------------------------------------------------------------------------|----------------|--------------------------------------------------------------------------------------------------------|----------------|------------------------------------------------------------------------------------------------------------------|----------------|------------------------------------------------------------|-----------------|
|                                       | New                                                                                                               | Rental Return  | New                                                                                                    | Rental Return  | New                                                                                                              | Rental Return  | RENT                                                       | LDW             |
| <b>RENT</b>                           | <b>30.00</b>                                                                                                      | <b>23.00</b>   | <b>48.00</b>                                                                                           | <b>37.00</b>   | <b>58.00</b>                                                                                                     | <b>48.00</b>   | <b>119.00</b>                                              | <b>12.00</b>    |
| <b>*LDW</b>                           | <b>5.00</b>                                                                                                       | <b>5.00</b>    | <b>6.00</b>                                                                                            | <b>6.00</b>    | <b>7.00</b>                                                                                                      | <b>7.00</b>    | <b>7.86</b>                                                |                 |
| <b>TAX</b>                            | <b>2.10</b>                                                                                                       | <b>1.68</b>    | <b>3.24</b>                                                                                            | <b>2.58</b>    | <b>3.90</b>                                                                                                      | <b>3.30</b>    | <b>\$138.86</b>                                            |                 |
| <b>TOTAL</b>                          | <b>\$37.10</b>                                                                                                    | <b>\$29.68</b> | <b>\$57.24</b>                                                                                         | <b>\$45.58</b> | <b>\$68.90</b>                                                                                                   | <b>\$58.30</b> |                                                            |                 |
|                                       |                                                                                                                   |                |                                                                                                        |                |                                                                                                                  |                | Baritone Saxophone                                         |                 |
|                                       |                                                                                                                   |                |                                                                                                        |                |                                                                                                                  |                | <b>RENT</b>                                                | <b>189.00</b>   |
|                                       |                                                                                                                   |                |                                                                                                        |                |                                                                                                                  |                | <b>LDW</b>                                                 | <b>15.00</b>    |
|                                       |                                                                                                                   |                |                                                                                                        |                |                                                                                                                  |                | <b>TAX</b>                                                 | <b>12.24</b>    |
|                                       |                                                                                                                   |                |                                                                                                        |                |                                                                                                                  |                | <b>TOTAL</b>                                               | <b>\$216.24</b> |

\*LDW: Loss Damage Waiver. Instrument retail values vary. Ask an associate for more information.

## Dare to Compare

- Fast & Easy Approval
- Quality Name Brands
- Big Cash Discounts
- Low Monthly Payments
- Return or Exchange Anytime

## Call Today or Rent Online

**410-744-1723**

You can also rent online at  
**www.rentfromhome.com**

Use Online Code: baltimore

## Visit Our Showroom

**Baltimore Brass Co.**

99 Mellor Ave.

Catonsville, MD 21228

Offer reserved for students enrolled in a school music program. Valid through 10/31/22.

# Three-Month Offer

Pay the First month's rent, then pay nothing for the next two months!

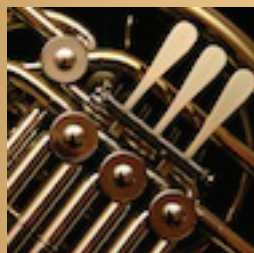
Groups 3 & 4 not included. Limit one instrument per student per school year. Not Valid with any other offer. Normal monthly payments begin after introductory special. Three-month minimum on Group Four Instruments.



Like Us  
On Facebook!

# Why Choose Us?

## Nobody Beats Our Price, Service, and Selection!



### **A GREAT BEGINNING:**

Our friendly & knowledgeable staff is here to answer your questions and help you select the right instrument & accessories for your child's musical needs.

### **NEW & LIKE NEW INSTRUMENTS:**

All of our brass, woodwind and string instruments are quality name brands you can trust and meet tough quality guidelines set forth by manufacturers, our quality control technicians and many music educators.

### **UPGRADE/EXCHANGE OPTIONS:**

Your instrument may be exchanged for an intermediate model or different instrument at any time. In some cases, up to 100% of rent paid may be applied toward the purchase.

### **INSTRUMENT PURCHASE OPTION:**

With our rental program, you may continue making monthly payments and apply the Base Rent paid toward the purchase price of an instrument at any time.

### **CANCEL AT ANY TIME:**

Because this is a month-to-month rental program, there is no minimum term and you may return the instrument at any time without further obligation.

### **BIG CASH PURCHASE DISCOUNTS:**

We offer cash discounts to our customers interested in purchasing any of our new or like-new instruments (even if renting). We will match or beat any competitor's advertised price.

### **LOSS DAMAGE WAIVER PLUS MAINTENANCE PROGRAM:**

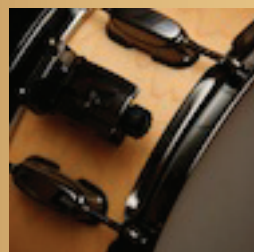
Your instrument will be protected against theft or damage beyond repair. Loaner instruments are provided to students (when available) while our certified service professionals tend to the instrument in need of service. It's peace of mind you can count on. Note: A small monthly fee may apply. Ask for details.

### **FAST AND EASY APPROVALS:**

We say YES when others say NO! We offer a rental plan for just about any credit situation and are extremely flexible with the approval process. In most cases, our customers are approved in just minutes.

### **BACKED BY A NATIONWIDE PROVIDER:**

Our business is a proud member of the Veritas Instrument Rental Network, a nationally recognized school music resource offering flexible options & value to parents, a commitment of service to music educators and quality musical instruments to students.



Want to learn 20 ways you can help your child succeed in music?  
Scan the QR code or visit Resources For Parents at [www.veritas-online.com](http://www.veritas-online.com).



Veritas Instrument Rental Incorporated is a proud member of the National Association of School Music Dealers, the National Association of Music Merchants and the National Association of Professional Band Instrument Repair Technicians